

The Bhusawal People's Charitable Sanstha's
Dadasaheb Devidas Namdeo Bhole College, Bhusawal

Environmental and Energy Usage Policy

Introduction:

At Dadasaheb Devidas Namdeo Bhole College, we recognize the importance of environmental sustainability and responsible energy usage in fulfilling our mission of education and research. This policy outlines our commitment to minimizing our environmental footprint and promoting energy efficiency across all aspects of our operations.

1. Environmental conservation:

- i. We will comply with all relevant environmental laws, regulations, and standards.
- ii. We will strive to minimize waste generation, promote recycling, and reduce pollution in all our activities.
- iii. We will incorporate environmental considerations into decision-making processes and institutional planning.

2. Energy Efficiency:

- i. We will implement energy-efficient technologies and practices to optimize energy consumption across campus facilities.
- ii. We will prioritize the use of renewable energy sources wherever feasible and economically viable.
- iii. We will conduct regular energy audits to identify opportunities for improvement and implement measures to enhance energy efficiency.

3. Sustainable practices:

- i. We will promote sustainable transportation options for students, faculty, and staff, such as cycling, walking, carpooling, and public transit.
- ii. We will encourage the use of electronic communication and documentation to reduce paper consumption.
- iii. We will incorporate sustainability principles into extension and educational programs to raise awareness and inspire action among students and staff.

4. Campus Development and Operations:

- i. We will integrate environmental considerations into campus planning, design, construction, and maintenance activities.
- ii. We will prioritize green building practices, including energy-efficient design, the use of sustainable materials, and the implementation of water-saving technologies.
- iii. We will promote the preservation and enhancement of green spaces and biodiversity on the campus.



5. Community Engagement:

- i. We will engage with students, faculty, staff, and the local community to foster a culture of environmental responsibility and sustainability.
- ii. We will collaborate with relevant stakeholders to support environmental initiatives and contribute to the broader goals of sustainable development.

6. Monitoring and Reporting:

- i. We will establish mechanisms to monitor and track our environmental performance, including energy usage, waste generation, and greenhouse gas emissions.
- ii. We will prepare and publish regular reports on our environmental and energy performance, highlighting achievements, challenges, and opportunities for improvement.

7. Leadership commitment:

- i. Dadasaheb Devidas Namdeo Bhole's leadership is committed to providing the necessary resources, support, and leadership to implement and uphold this policy effectively.
- ii. Seniors will review and endorse this policy periodically to ensure its alignment with institutional values and objectives.

Conclusion: This policy reflects our dedication to environmental conservation, energy efficiency, and sustainability in all aspects of our operations. By working together as a community, we can make a positive impact on the environment and contribute to a more sustainable future for generations to come.




PRINCIPAL
Dadasaheb Devidas Namdeo Bhole
Dadasaheb Devidas Namdeo Bhole's College, Shusawali

Environmental Promotional Activities beyond the Campus:

By implementing environmental promotional activities like tree plantation, cleanliness at Bazaar Samiti (Market committee) collection of Nirmalya carried out effectively during the COVID-19 pandemic, promoting sustainability and community engagement while prioritizing the health and safety of participants. Tree plantation activities at faculty members' homes during the COVID-19 pandemic, educational institutions can continue to promote environmental awareness and engagement while prioritizing the health and safety of participant.

Sr. No.	Events	Dates	Participants
1.	Dr. Bharati Bendale participated in the campaign for “One day for my Ganapati Bappa” along with MLA, Bhusawal at Tapi River	28/09/2018	One faculty member
2.	Cleanliness at Janata High School, Sakri	22/12/2018	By NSS Volunteers and NSS programme officers
3.	Village cleaning at adopted place, Sakri	24/12/2018	By NSS Volunteers and NSS programme officers
4.	Village cleaning at NSS adopted place Sakri	28/12/2019	By NSS Volunteers and NSS programme officers
5.	Mask distribution during COVID-19 pandemic	01/04/2020 to 07/04/2020	NSS Programme officers and Volunteers
6.	Tree Plantation of Faculty membes at their respective homes	08/07/2020	All Faculty
7.	Cleanliness and collection of plastic waste at Bazaar Samiti (Market Committee)	16/10/2022	Faculty members and NSS Volunteers
8.	Nirmalya collection during Anant Chaturdashi at Tapi River	09/09/2022	NSS Volunteers and Programme Officers



Figure 1 Dr. Bharati Bendale participated in the campaign for "One day for my Ganapati Bappa" along with MLA, Bhusawal at Tapi River (2018)

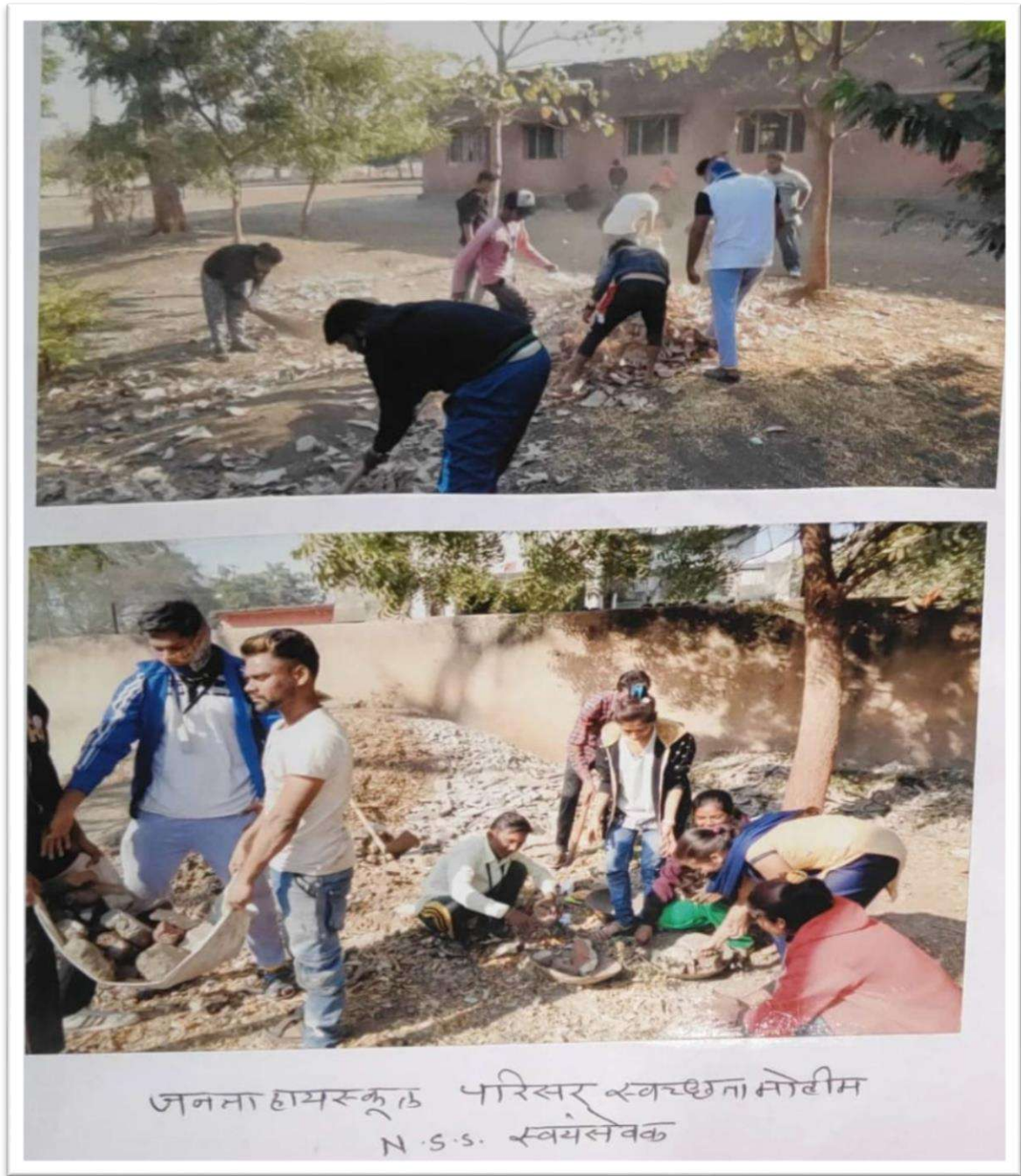


Figure 2 Cleanliness at Janata High School, Sakri (2018)

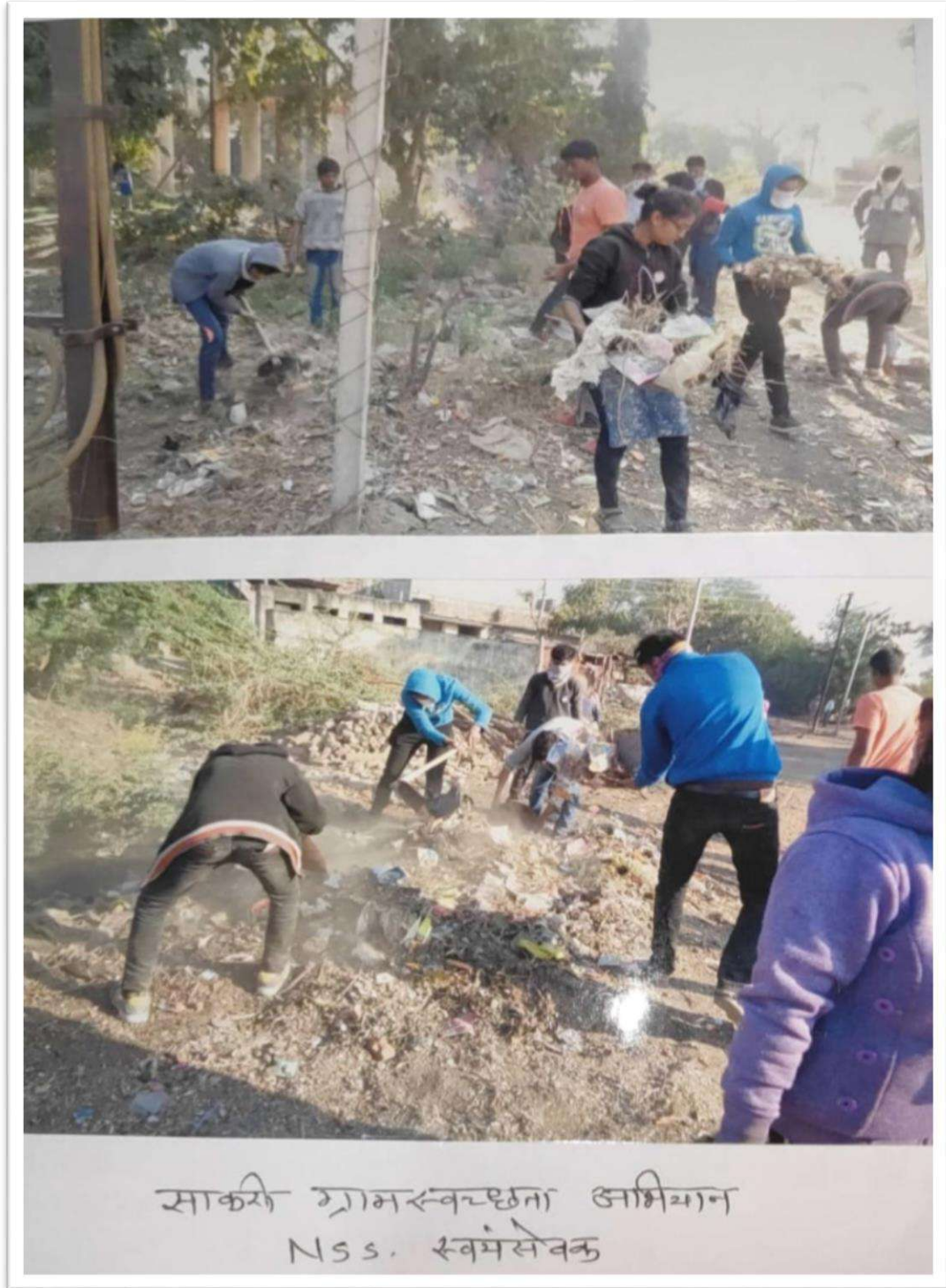


Figure 3 Village cleaning at NSS adopted place Sakri (2018)



Figure 4 Village cleaning at NSS adopted place Sakri (2018)

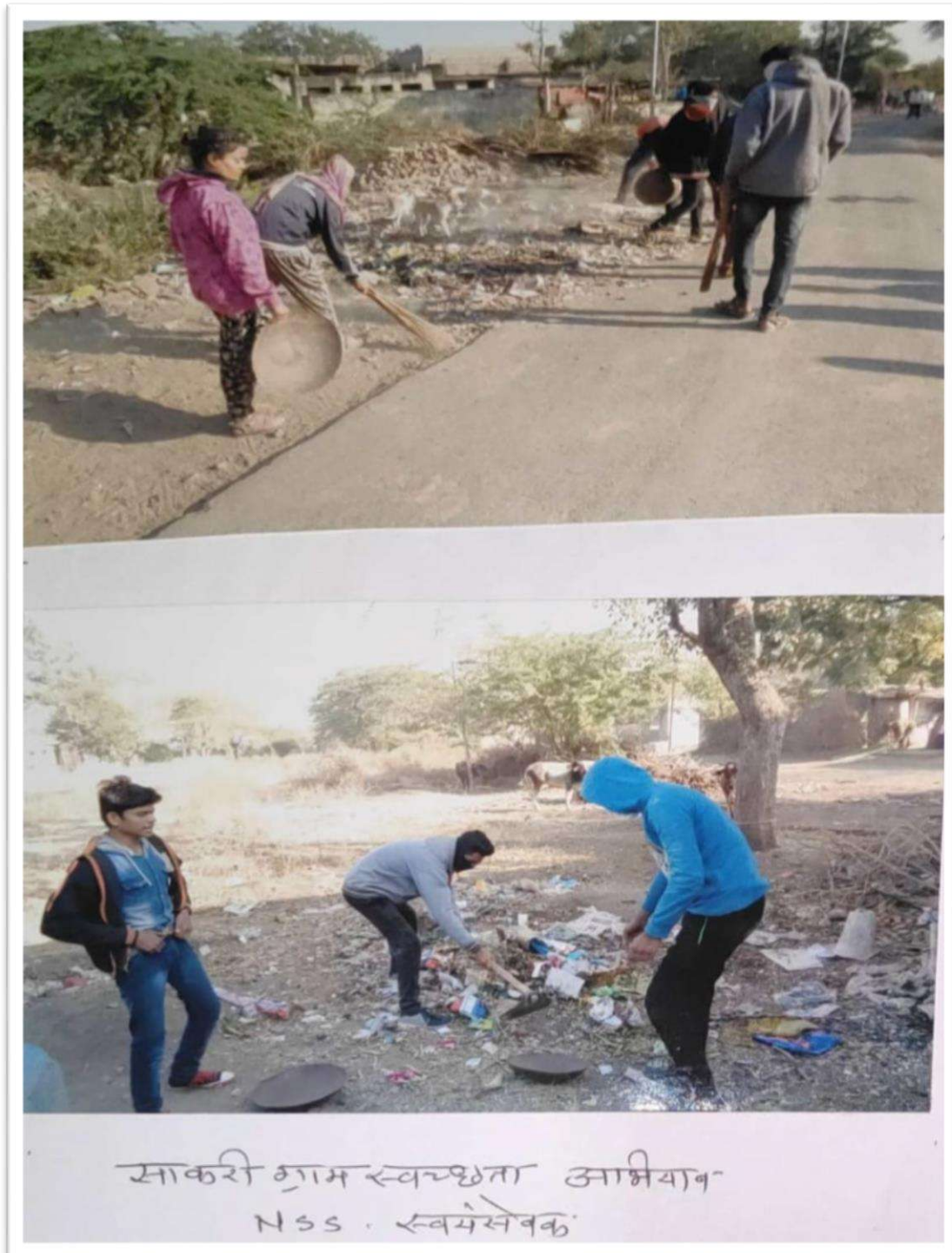


Figure 5 Village cleaning at NSS adopted place Sakri (2018)



Figure 6 Village cleaning at NSS adopted place Sakri



Figure 7 Village cleaning at NSS adopted place Sakri



Figure 8 Village cleaning at NSS adopted place Sakri



Figure 9 Cleaning of Crematorium by NSS Volunteers at adopted village



भुसावळ येथे भोळे महाविद्यालयातर्फे मास्क वाटप करीत जनजागृती

भुसावळ = प्रतिनिधी

कोरोना वाटपासाठी देविदास माधवदेव भोळे महाविद्यालयाच्या राष्ट्रीय सेवा योजना मध्ये आज भुसावळ शहराच्या विविध भागात मास्क वाटप करण्यासाठी कार्यवाही सुरू. देशभरात सुद्धा असलेल्या कोरोनाच्या प्रसार टाळण्यासाठी आणि लोकांना योग्य निर्णय होऊ नये म्हणून वाटप होत आहे. कार्यवाही करणाऱ्या या संदर्भात टीव्ही सेवा योजना विभागाचे प्रा. डॉ. वी. वासुदेव आणि प्रा. डॉ. दयाधन राणे या उपस्थित राहिले.

कोरोना विषाणू ही लागण झाल्यामुळे लोकांना आरोग्य तळमले आणि आजार झाल्यामुळे वाटप होऊन कार्यवाही सुरू होऊन हा आजार आटोक्यात आणण्यासाठी



नागरिकांना मास्क वाटप करताना राजेश्वरी अदिकाशी व कार्यवाही.

वेईल जसे मन या प्रभावी महाविद्यालयाचे प्राचार्य डॉ. ज्ञान. वी. पालक यांनी व्यक्त केले.

या प्रसंगी कार्यवाही अधिकारी प्रा. डॉ. वासुदेव आणि प्रा. डॉ. दयाधन राणे यांनी

शहराच्या सर्व भागातील उपस्थित नागरिकांना मास्क वाटप करीत असताना बाहेर गावातून येणाऱ्या व्यक्तींना तपासणी करण्यासाठी प्रेरित करा, निश्चित मास्क

रासेयोच्या उपक्रमाद्वल समाधान

एकाच नगरातून किंवा उपनगरातून जे कदाचित्त होवे होते ते भोळे महाविद्यालयाच्या राष्ट्रीय सेवा योजना विभागाच्या माध्यमातून साध्य झाले आणि सुपुढे मुद्दा उपक्रम झाले असे मत काही जणांनी व्यक्त केले.

वापरा, वारंवार हात साबण आणि सॅनिटाइझर ने घुका, शासनाचे आवाहन केल्याने जनात कसबु शहराच्या उपक्रमांना उत्प्रेरित प्रतिसाद देवून मानव जातीचा वर आलेले संकट टाळण्यासाठी शासनाने सहाय्य करून आणले आणि परिसरातल्या सर्वांचे आरोग्य निरामय ठेवण्याचा प्रयत्नवात सहभागी होत आहे. आवाहन केले.

Figure 10 Mask Distribution



Figure 11 Tree Plantation



Figure 12 Tree Plantation



Figure 13 Cleaning the campus of Bazaar samiti



NSS एकक का कडून गणपती विसर्जनाच्या दिवशी तापी नदी वर निर्माल्य संकलन करण्यात आले. त्याप्रसंगी मा. प्राचार्य डॉ. आर. पी. फालक व राष्ट्रीय सेवा कार्यक्रम अधिकारी प्रा. डॉ. आर. बी. ढाके, सहायक कार्यक्रम अधिकारी डॉ. जे. बी. चव्हाण उपस्थित होते.

Figure 14 Nirmalya collection at Tapi River